



CR2

Rosyth School
Second Continual Assessment 2004
Mathematics
Primary 3

Total



Name: _____

Class: Pr 3-_____ Register No. _____ Duration: 1h 15 min

Date: 25 Aug 2004

Parent's Signature: _____

Instructions to Pupils:

1. Do not open this booklet until you are told to do so.
2. Follow all instructions carefully.
3. This paper consists of 3 parts, Sections A, B and C.

	Maximum	Marks Obtained
Section A	10	
Section B	28	
Section C	12	
Total	50	

* This paper consists of 12 pages altogether.

Section A (10 marks)

For Questions 1 to 5, 4 options are given. One of them is the correct answer.
Write your choice (1, 2, 3 or 4) in the brackets provided (5 x 2 marks)

1. Which one of the following is the same as 1 000 cents?

(1) \$0.10

(2) \$1.00

(3) \$10.00

(4) \$100.00

()

2. Express 5 m 6 cm in centimetres.

(1) 56 cm

(2) 506 cm

(3) 560 cm

(4) 5 006 cm

()

3. Which one of the following is true ?

(1) $1 \text{ kg} = 90 \text{ g} + 10 \text{ g}$

(2) $2 \text{ kg } 20 \text{ g} = 2 \text{ 020 g}$

(3) $3 \text{ 980 g} = 3 \text{ kg } 9 \text{ g} + 80 \text{ g}$

(4) $4 \text{ 050 g} = 4 \text{ kg } 500 \text{ g}$

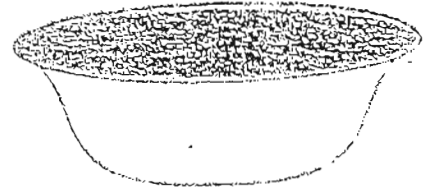
()

4.



250 ml

glass



3 l

basin

The basin can hold _____ ml more water than the glass.

(1) 2 740 ml

(2) 2 750 ml

(3) 2 850 ml

(4) 3 250 ml

5.

Mrs Chee bought a dress for \$58.60 and 2 blouses for \$17 each. She paid the cashier \$100. How much change did she receive ?

(1) \$7.40

(2) \$24.40

(3) \$41.40

(4) \$92.60

Section B (28 marks)

For Questions 6 to 19, write your answers in the box provided. Give your answer in the unit stated. (14 x 2 marks)

6. Justin had a two-dollar note. He wanted to exchange for twenty-cent coins. How many such coins would he get from the exchange ?

20¢ coins

7. Arrange the following distances in descending order.

1 800 m

1 004 m

4 080 m

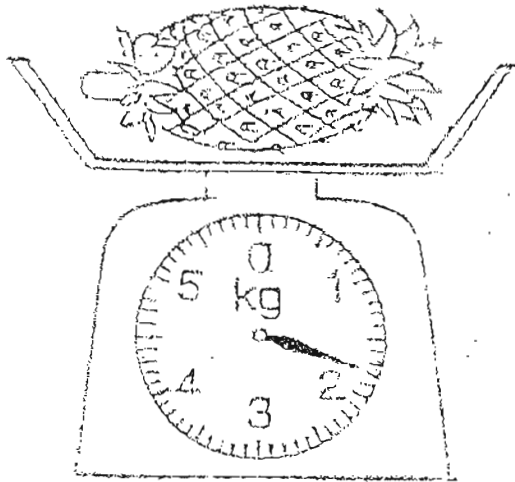
880 m

--

8. A glass can hold 125 ml of juice. After pouring 3 glasses of juice from a bottle, the bottle is empty. Find the capacity of the bottle.

ml

9.

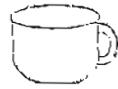


What is the mass of the pineapple ?

10. Joy shared \$312 equally with her two brothers. How much did each brother get ?

11. The length of a sword is twice the length of a dagger. If the sword is 50 cm long, find the total length of 4 such daggers.

12.

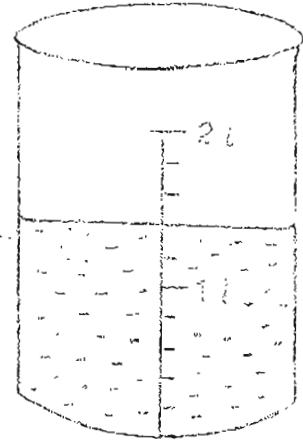


50 ml

cup



teapot



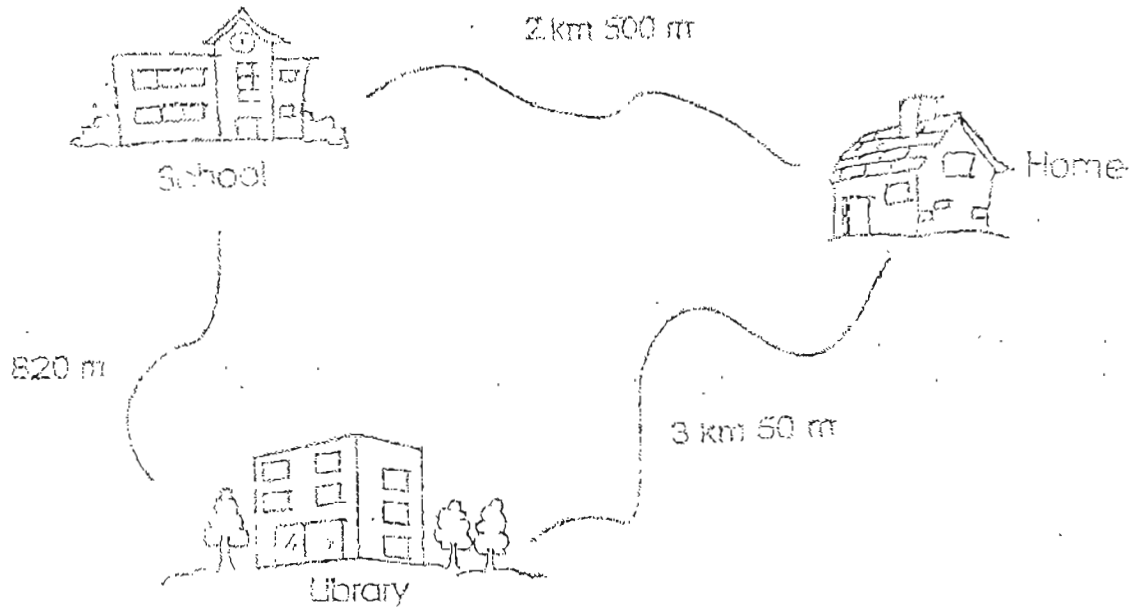
beaker

The beaker is filled with 1 teapot of water and 1 cup of water. What is the capacity of the teapot ?

13. A shopkeeper packed 525g of flour equally into 3 packets. Find the mass of each packet of flour.

14. Mr Lee earns \$3 500 per month. He spends \$2 600 each month. How much will he save in 4 months ?

15.



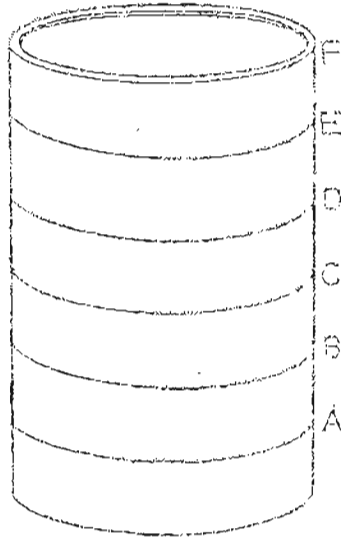
Aman usually walks from home to school. However, on Monday, he needed to borrow some books from the library before going to school. How much farther did Aman walk compared to his normal route ?

1941 m

16. 2 files cost as much as 3 pens. If each file costs \$1.50, what is the total cost of 1 file and 1 pen ?

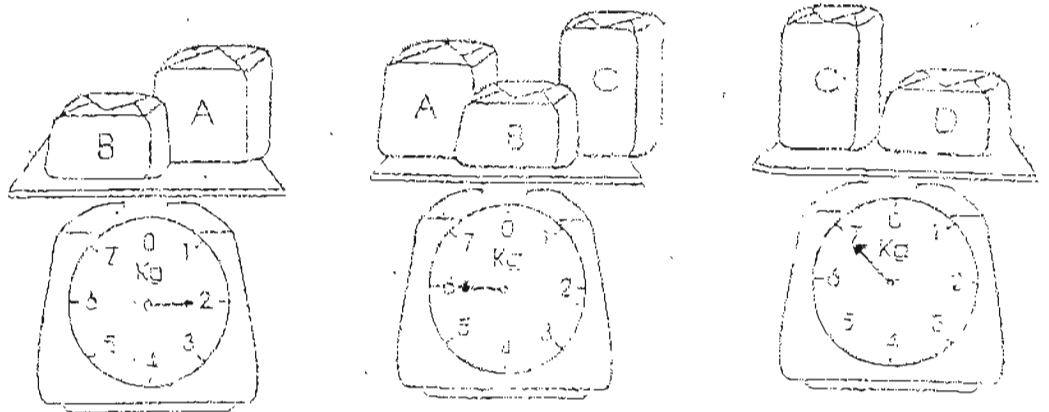
\$:

17.



A tin is marked into 6 equal levels. It can hold 12 jugs or 24 glasses of water. After pouring 4 jugs and 4 glasses of water, the water level should reach level _____.

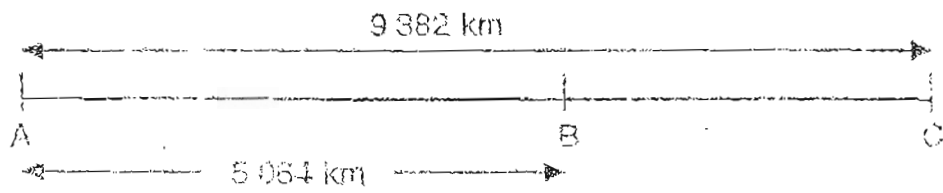
18.



Find the mass of Parcel D.

 kg

19.



The distance between A and C is 9 382 km and between A and B is 5 064 km. How much nearer is B to C than B to A?

--

km

Section C (12 marks)

For Questions 20 to 23, show your workings clearly in the space below each question and write the answers in the blanks provided. The mark for each question is given in the brackets.

20. Ruth and Sue's total mass is 108 kg. If Ruth is 16 kg lighter than Sue, what is the mass of Sue ? (3 marks)

Answer : _____ (3 marks)

21. Keith had three as much money as Jerry. Tim had twice as much money as Keith. If Jerry had \$90, how much did they have altogether? (3 marks)

Answer: _____ (3 marks)

22. Mrs Sim cut a piece of ribbon into 14 pieces. 6 of the pieces are each 9 cm long and the rest are each 5 cm long. What was the length of the ribbon at first? (3 marks)

Answer: _____ (3 marks)

23.



Tank X



Jug Y



Glass Z

Glass Z can hold 500 ml of water. To fill up Jug Y, it needs 5 such glasses. The capacity of Jug Y is only half of that of Tank X. Find the total capacities of the 3 containers. (3 marks)

Answer: _____ (3 marks)

----- End of Paper -----

ROSYTH SCHOOL
SECOND CONTINUAL ASSESSMENT 2004
MATHEMATICS
PRIMARY 3

- 1) 3
- 2) 2
- 3) 2
- 4) 2
- 5) 1
- 6) 10
- 7) 4080m, 1800m, 1004m, 360m
- 8) 375
- 9) 1800
- 10) 104
- 11) 100
- 12) 1 litres 350 ml
- 13) 175
- 14) 3600
- 15) 1 km 370 m
- 16) \$ 2.50
- 17) C
- 18) 3
- 19) 746
- 20) 62 kg
- 21) \$ 900
- 22) 94 cm
- 23) 8000 ml