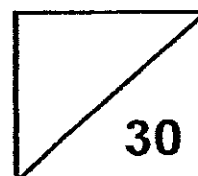




**Rosyth School**  
**Topical Test for 2014**  
**SCIENCE**  
**Primary 3**

Name: \_\_\_\_\_

Total  
Marks:



Class: Pr 3 \_\_\_\_\_

Register No. \_\_\_\_\_ Duration: 50min

Date: 3 March 2014

Parent's Signature: \_\_\_\_\_

---

**Instructions to Pupils:**

1. Do not open the booklet until you are told to do so.
2. Follow all instructions carefully.
3. This paper consists of 2 sections, Part I and Part II.
4. For questions 1 to 7, write the correct answer in the brackets provided.
5. For questions 8 to 12, give your answers in the spaces provided in Part II.

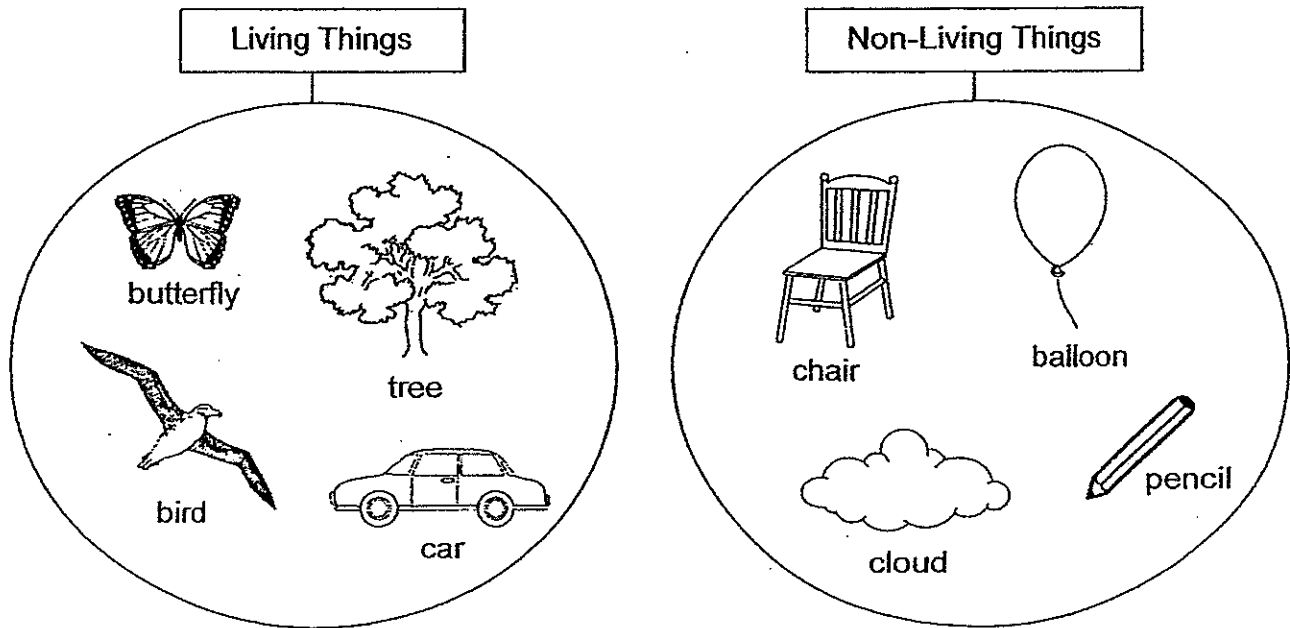
	<b>Maximum</b>	<b>Marks Obtained</b>
<b>Part I</b>	<b>14 marks</b>	
<b>Part II</b>	<b>16 marks</b>	
<b>Total</b>	<b>30 marks</b>	

\* This booklet consists of 9 pages.

**Part I (14 marks)**

For each question from 1 to 7, four options are given. One of them is the correct answer. Make your choice (1, 2, 3 or 4). Write the correct answer in the bracket provided.

1. Look at the classification below.



Which one of the things above has been grouped wrongly?

- (1) Car
- (2) Tree
- (3) Cloud
- (4) Butterfly

(     )

2. Alice was at a park and noticed that there were birds chirping nearby and the park was very crowded. Which of the following senses were Alice using?

- (1) Smell and sight
- (2) Sight and touch
- (3) Sight and hearing
- (4) Smell and hearing

(     )

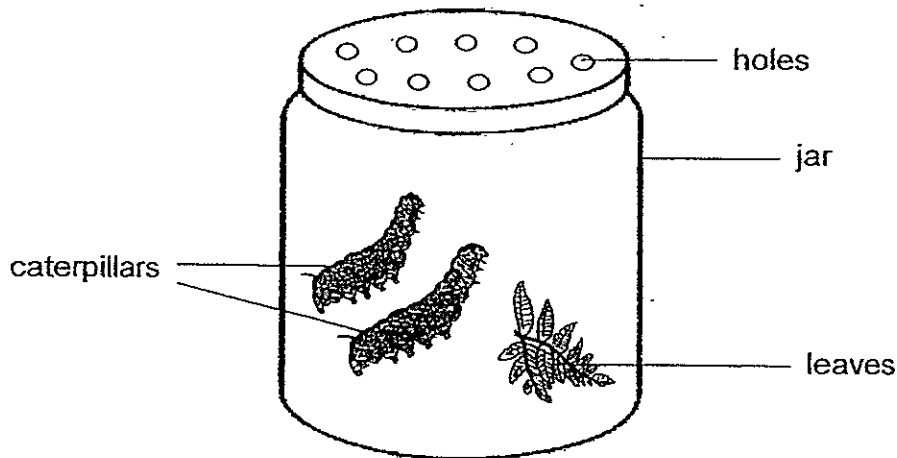
3. Which of the following statements are true about both plants and animals?

- A: Both can grow and die.
- B: Both can reproduce by seeds.
- C: Both can make their own food.
- D: Both can move by themselves.

- (1) A and D only
- (2) C and D only
- (3) A, B and C only
- (4) B, C and D only

( )

4. Ken placed two caterpillars in a jar with some leaves as shown in the picture below.

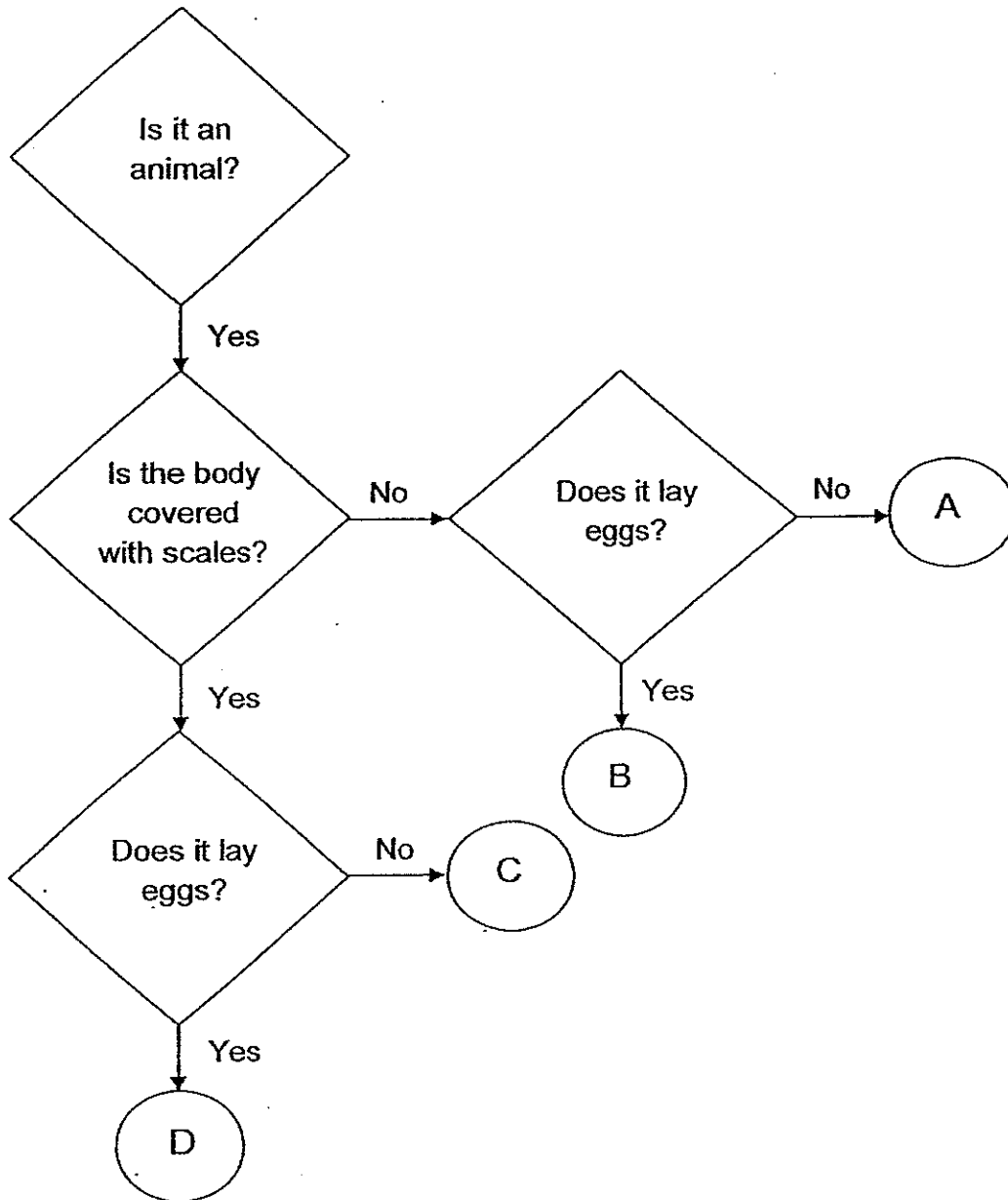


After two days, what would most likely happen to the number of leaves and the caterpillar?

	Number of leaves	Number of caterpillars
(1)	Decrease	Increase
(2)	Decrease	Remain the same
(3)	Remain the same	Decrease
(4)	Remain the same	Remain the same

( )

5. Study the flowchart below.



Which one of the letters (A, B, C or D) best represents a reptile?

- (1) A
- (2) B
- (3) C
- (4) D

( )

6. The picture below shows two types of land plants.



Based on observation, in what way are they similar?

- (1) Both plants produce flowers.
- (2) Both plants have weak stems.
- (3) Both plants have big flower petals.
- (4) Both plants have the same shaped leaves.

( )

7. Adrian observed and recorded the characteristics of a plant in his garden as shown in the table below.

A	It is a land plant.
B	It does not have flowers.
C	It has spores underneath the leaves.

Which of the above statement(s) can tell that the plant is definitely a non-flowering plant?

- (1) B only
- (2) C only
- (3) B and C only
- (4) A, B and C

( )

**End of Part I**

**Part II (16 marks)**

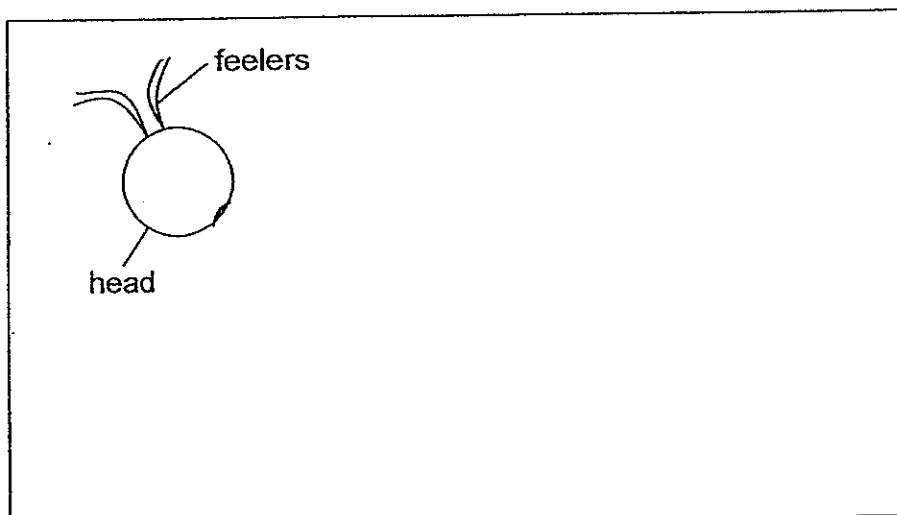
For questions 8 to 12, write your answers in the blanks provided.

8(a) State two common characteristics of an insect. (1m)

---

---

(b) Complete the picture below by drawing the legs and the rest of the body parts of an insect as shown below. (1m)



9. Haris found three things, K, L and M with the characteristics as shown in the table below. A tick (✓) shows that the thing has the characteristic and a cross (X) shows that it does not have the characteristic.

Things	Grow	Reproduce	Move from place to place
K	X	X	✓
L	✓	✓	✓
M	✓	✓	X

(a) State all the characteristics of M. (1m)

---



---

(b) State a similarity between K and L. (1m)

---



---

(c) Which is most likely to be a non-living thing? Explain why. (1m)

---



---

10. Rajes planted a chilli plant over a period of 6 months. She watered the plant every day and recorded the height of the plant as shown in a table below.

Number of months	Height of plant (cm)
1	30
2	40
4	50
6	70

(a) What do plants need to survive? Tick (✓) in the boxes below. (1m)

Air

Water

Food

(b) What do you observe about the height of the plant from month 1 to month 6? (1m)

---

---

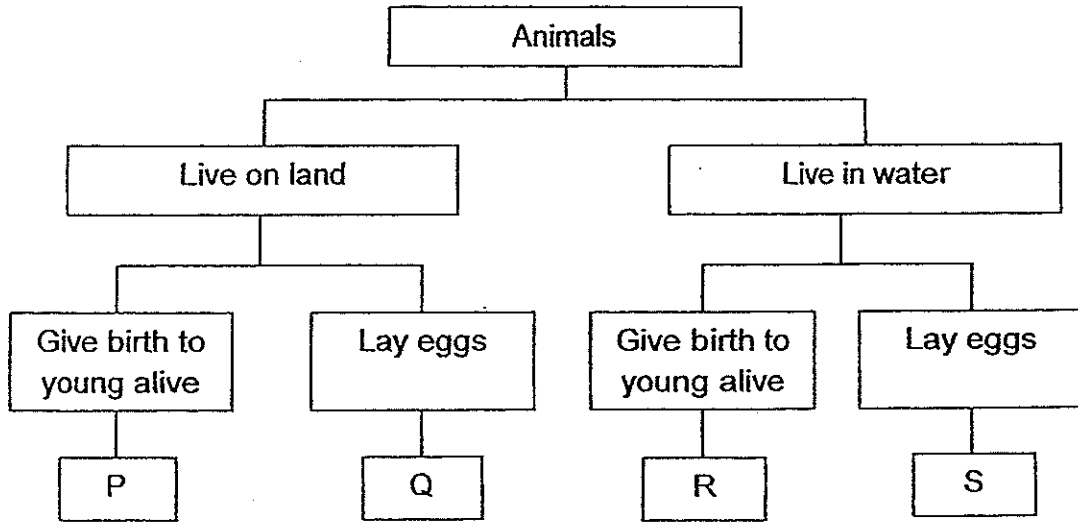
(c) Based on the information found in the table above, what is the characteristic of living things shown by the plant? (1m)

---

---



11. Study the classification chart as shown below.



(a) Based on the chart above, state a similarity between Animal R and Animal S. (1m)

---

---

(b) State two differences between Animal Q and Animal R. (2m)

---

---

(c) Lina says that Animal P is likely a mammal. Do you agree with her? Explain why. (1m)

---

---

12. Alex saw the pictures of two organisms, E and F as shown below.



E



F

(a) Which group of living things do Organisms E and F belong to? (2m)

Organism E: \_\_\_\_\_

Organism F: \_\_\_\_\_

(b) State the difference between the organisms, E and F, in how they obtain food and reproduce. (2m)

(i) How they obtain food:

---

---

(ii) How they reproduce:

---

---

**End Of Paper**

**EXAM PAPER 2014**

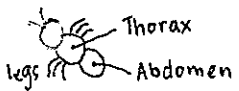
LEVEL : PRIMARY 3

SCHOOL : ROSYTH SCHOOL

SUBJECT : SCIENCE

TERM : TERM 1 – TOPICAL TEST

Q1	Q2	Q3	Q4	Q5	Q6	Q7
1	3	1	2	4	1	3

Q8	(a)	It has 6 legs and 3 body parts
	(b)	
Q9	(a)	Thing M can grow, reproduce but cannot move from place to place.
	(b)	Thing K and L can move from place to place.
	(c)	Thing K will most likely be a non-living thing because it cannot grow and reproduce.
Q10	(a)	Air <input checked="" type="checkbox"/> Water <input checked="" type="checkbox"/> Food <input checked="" type="checkbox"/>
	(b)	The height of the plant increased.
	(c)	Living things grow.
Q11	(a)	Animal R and S live in water.
	(b)	Animal R lives in water and give birth to young alive while animal Q lives on land and lay eggs.
	(c)	Yes. Animal P is likely a mammal because it gives birth to young alive.
Q12	(a)	Organism E : Fungi Organism F : Plant
	(b)	(i) Organism E feeds on plant and animals while organism F makes its own food, (ii) Organism E reproduces by spores while organism F reproduces by seeds.

