

**RIVER VALLEY PRIMARY SCHOOL**  
**2015 Semestral Assessment 2**  
**PRIMARY 3**

**SCIENCE**  
**(BOOKLET A)**

Name : \_\_\_\_\_ ( )

Date: 03 / 11 / 2015

Class: P3 \_\_\_\_\_

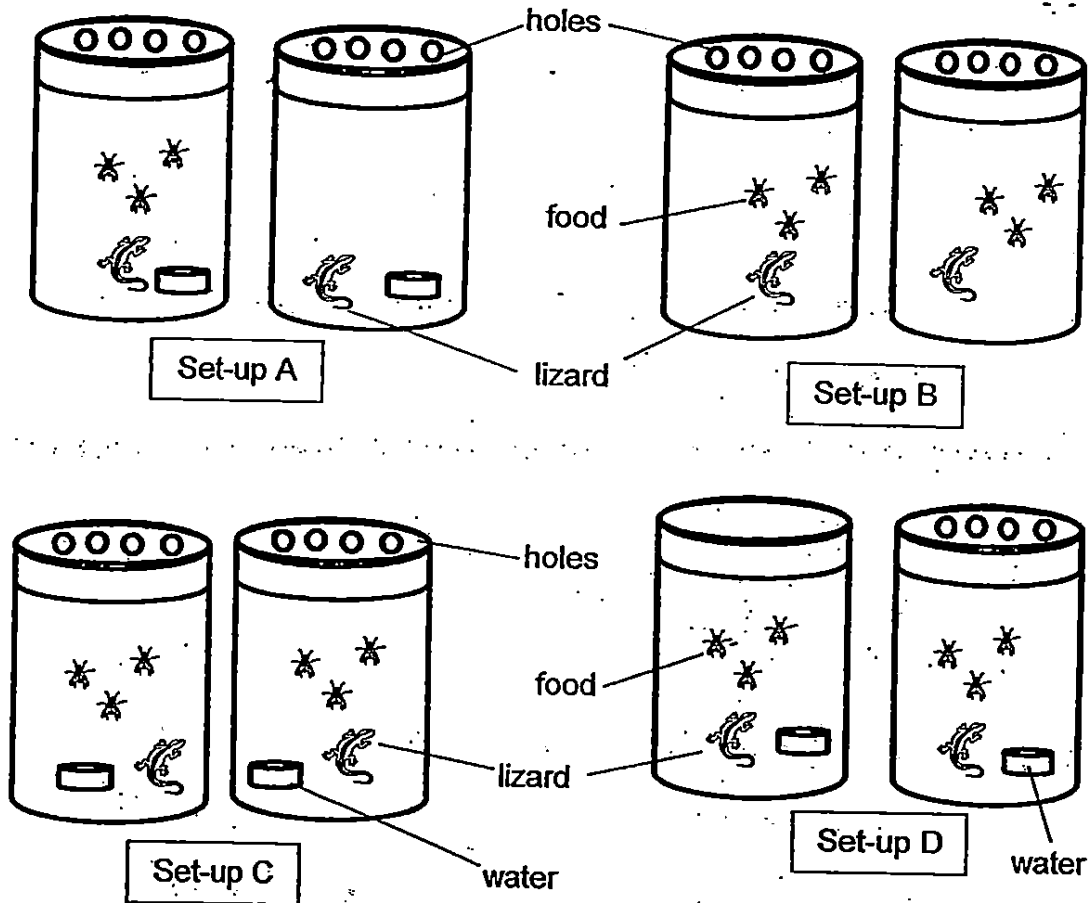
Total Time for Booklet A & Booklet B : 1 hr 30 mins

**INSTRUCTIONS TO CANDIDATES**

1. Write your name, index number and class in the space above.
2. Do not turn over this page until you are told to do so.
3. Follow all instructions carefully.
4. Answer all questions.
5. For Section A, shade your answers for questions 1 to 15 in the Optical Answer Sheet (OAS) provided.
6. For Section B, write your answers for questions 16 to 23 in the space provided in the booklet.
7. The total marks for Booklet A is 30 marks.

For each question 1 to 15, four options are given. One of them is the correct answer. Make your choice (1, 2, 3 or 4). Shade the oval (1, 2, 3 or 4) on the Optical Answer Sheet.

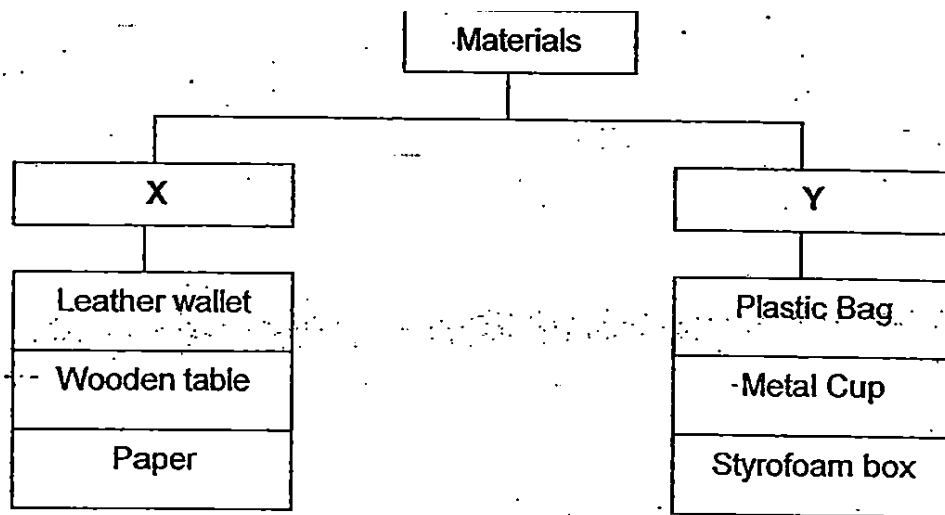
1. Mary wants to prove that living things need air to be alive.



Which one of the following set-ups should Mary use for her experiment?

- (1) Set-up A
- (2) Set-up B
- (3) Set-up C
- (4) Set-up D

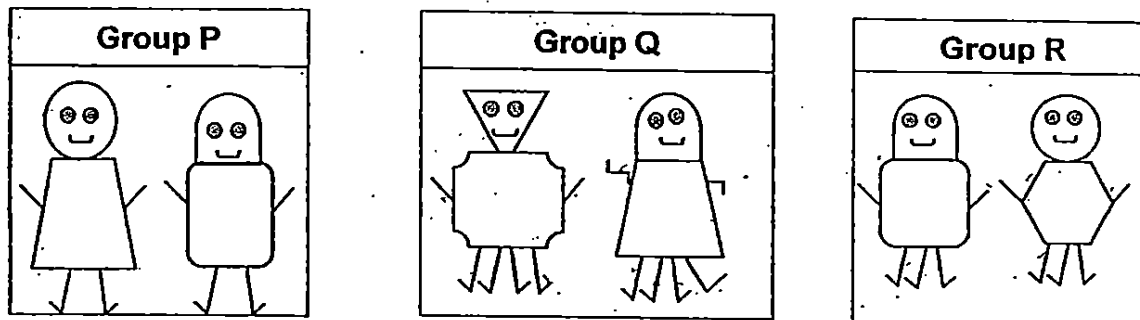
( )



Which of the following shows the correct headings for X and Y?

	X	Y
(1)	Non - magnetic	Magnetic
(2)	Breakable	Unbreakable
(3)	Made from plants	Made from animals
(4)	Made from things which were once alive	Made from things which were never alive

3. The robots below have been grouped according to their characteristics.

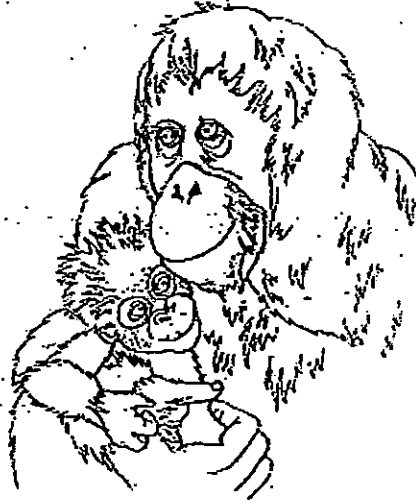


The robots were grouped according to the \_\_\_\_\_.

- (1) number of eyes
- (2) number of legs
- (3) shape of the head
- (4) type of body shape

( )

4. Linda saw an animal with its young clinging to it in the jungle. Both their bodies were covered with hair. The young was feeding on milk from the adult.



Which animal group does the animal belong to?

- (1) fish
- (2) birds
- (3) insects
- (4) mammals

( )

5. Chloe caught two different organisms which can fly. One of them is an insect.

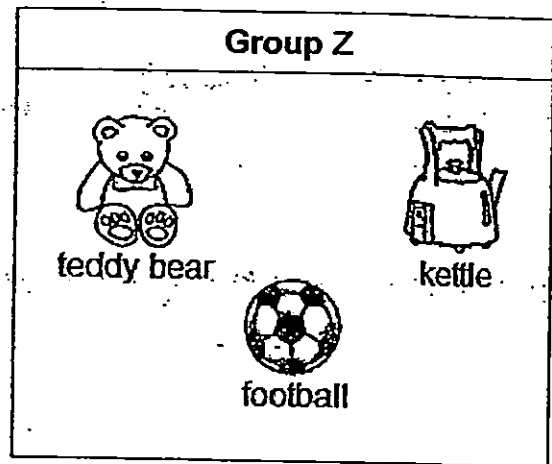
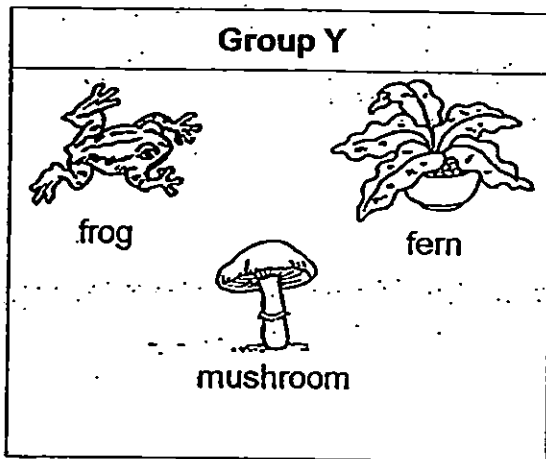
Which of the following characteristics are important to help Chloe identify that it is an insect?

- A : A head
- B : Two eyes
- C : Two wings
- D : Two antennae
- E : Three body parts

- (1) A and C only
- (2) D and E only
- (3) A, B and C only
- (4) C, D and E only

( )

6. Study the two groups of things shown below.

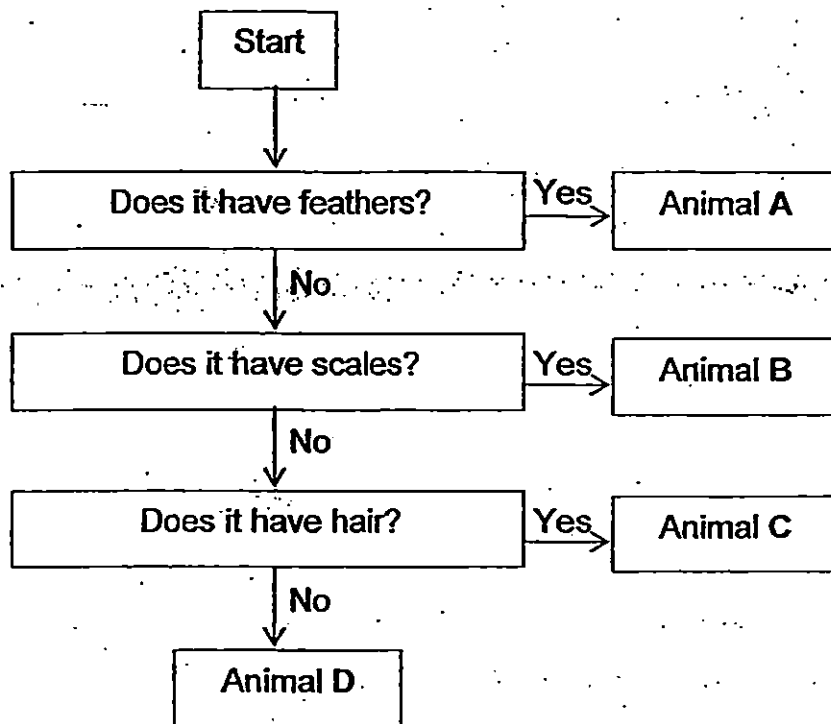


Which one of the following statements is true?

- (1) The things in group Z can grow while the things in group Y cannot.
- (2) The things in group Z can move while the things in group Y cannot.
- (3) The things in group Y can reproduce while the things in group Z cannot.
- (4) The things in group Y can make its own food while the things in group Z cannot.

( )

7. Study the flowchart below carefully.



Based on the flowchart above, which animal, A, B, C or D best represents a fish?

- (1) Animal A
- (2) Animal B
- (3) Animal C
- (4) Animal D

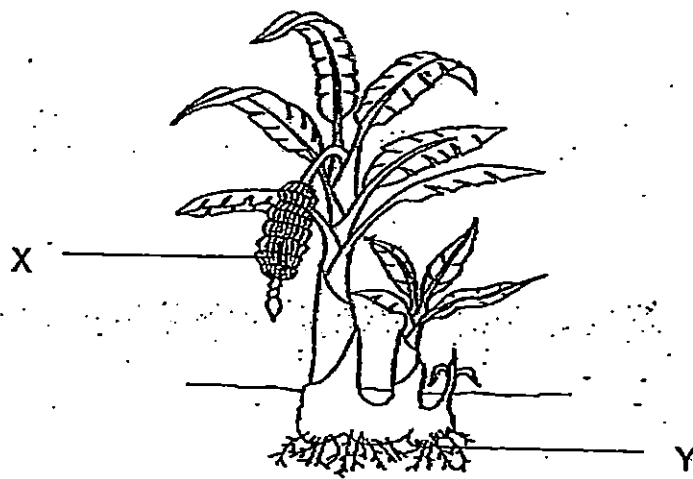
( )

8. Which of the following statement(s) about plants is/are correct?

- A : Flowering plants produce spores.
- B : Flowering plants reproduce by seeds.
- C : Non-flowering plants do not bear fruits.
- D : Non-flowering plants reproduce by seeds.

- (1) A and C only
- (2) B and C only
- (3) A and D only
- (4) B and D only

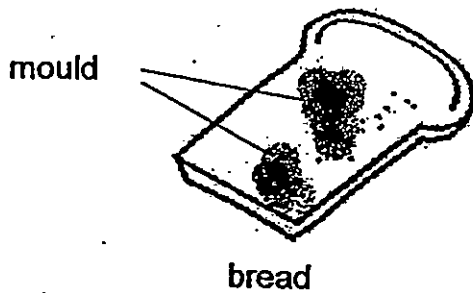
( )



Identify parts X and Y.

	Part X	Part Y
(1)	Fruit	Roots
(2)	Stem	Leaf
(3)	Leaf	Roots
(4)	Roots	Fruit

10. Study the pictures shown below.

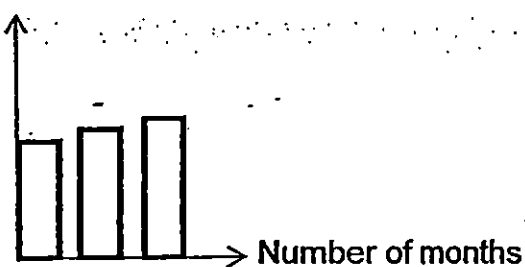


Which one of the following statements is true?

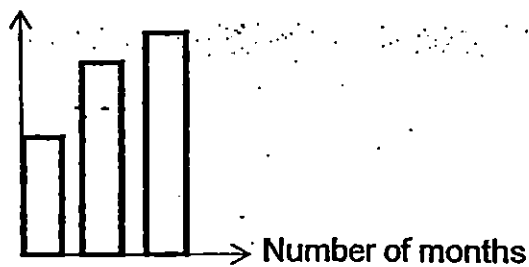
- (1) Both the mould and the bird's nest fern reproduce by spores.
- (2) Both the mould and the bird's nest fern can make their own food.
- (3) The bird's nest fern need water to survive but the mould does not.
- (4) The bird's nest fern does not need food to survive but the mould needs food to survive.

11. The two graphs below shows the height of 2 similar plants, A and B, over 3 months. Both plants were placed in the same location and watered regularly with the same amount of water.

Height of Plant A



Height of Plant B



Based on the graphs above, which one of the following statements is true?

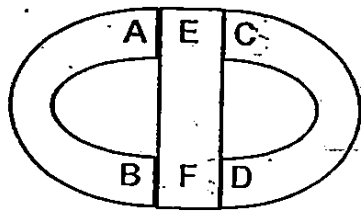
- (1) Only Plant A can grow.
- (2) Plant A grows less than Plant B.
- (3) Plant B receives less sunlight than Plant A.
- (4) Plant B can make food but Plant A cannot. ( )

12. At which stage(s) does/do a mosquito have to stay in water?

- A : Egg
- B : Larva
- C : Pupa
- D : Adult

- (1) A, B and C only
- (2) B, C and D only
- (3) A, B and D only
- (4) A, B, C and D only ( )

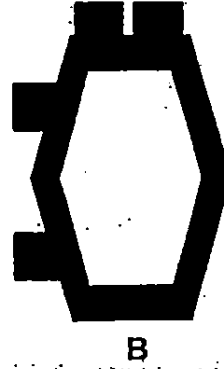
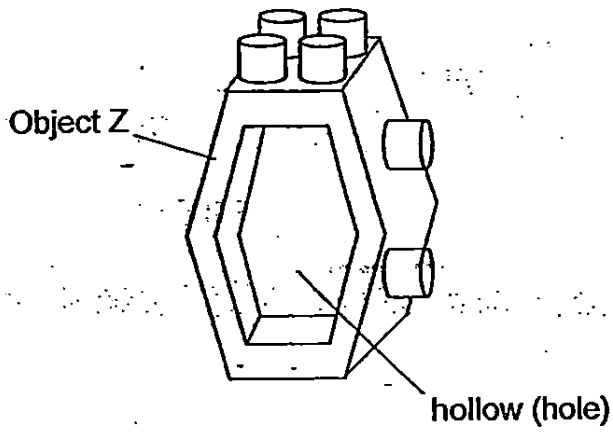




Based on the diagram above, which of the following statements is true?

- (1) Poles B and C are like poles.
- (2) Poles A and D are unlike poles.
- (3) Poles F and D will repel each other.
- (4) Poles B and D will attract each other.

( )

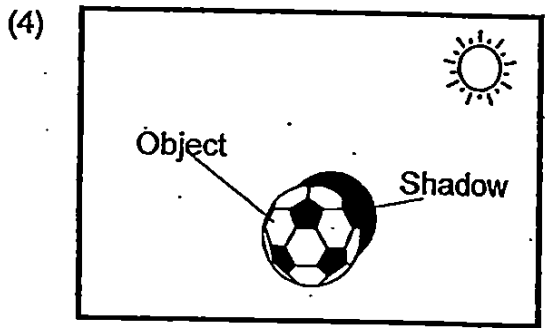
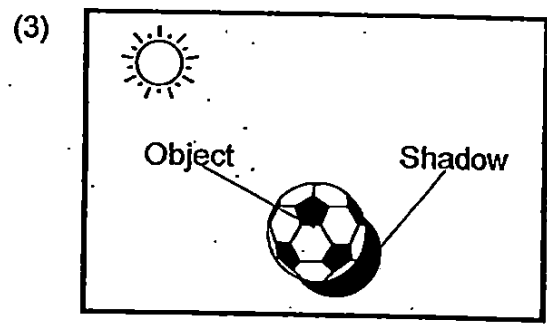
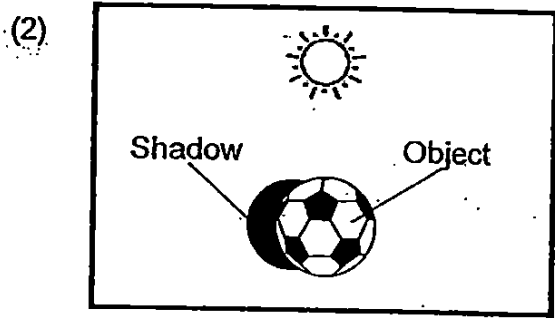
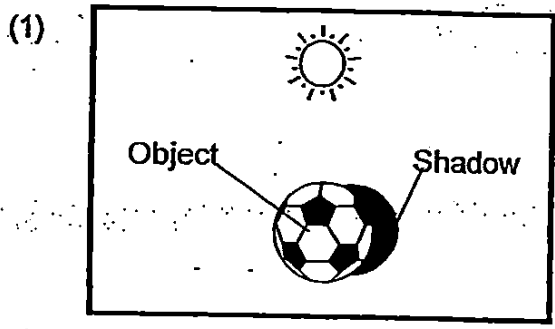


Which of the following shadows can be formed by Object Z?

- (1) A and B only
- (2) C and D only
- (3) A, B and C only
- (4) A, B, C and D

( )

Which one of the following diagrams shows the correct position of the sun?



( . . )

**RIVER VALLEY PRIMARY SCHOOL  
2015 Semestral Assessment 2  
PRIMARY 3**

**SCIENCE  
(BOOKLET B) -**

Name : \_\_\_\_\_ ( )

Date: 03 / 11 / 2015

Class : P3 \_\_\_\_\_

Total Time for Booklet A & Booklet B : 1 hr 30 mins

**INSTRUCTIONS TO CANDIDATES**

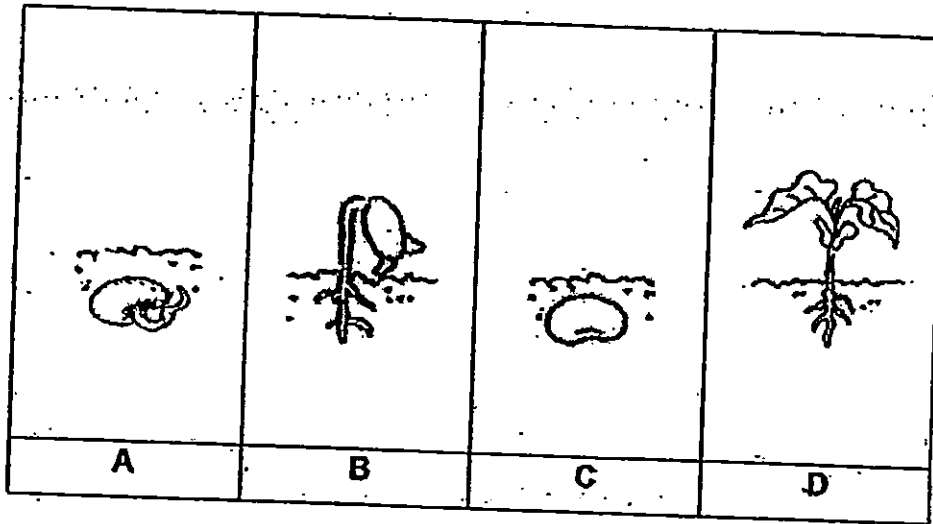
1. Write your name, index number and class in the space above.
2. Do not turn over this page until you are told to do so.
3. Follow all instructions carefully.
4. Answer all questions.
5. For Section A, shade your answers for questions 1 to 15 in the Optical Answer Sheet (OAS) provided.
6. For Section B, write your answers for questions 16 to 23 in the space provided in the booklet.
7. The total marks for Booklet B is 20 marks.

<b>Booklet A</b>		<b>/30</b>
<b>Booklet B</b>		<b>/20</b>
<b>Total</b>		<b>/50</b>
<b>Parent's signature</b>		

**Section B (20 marks)**

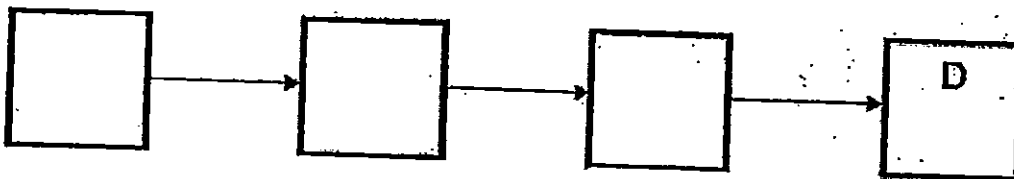
**Write your answers to questions 16 to 23 in this booklet.**

**16. The pictures below show the growth of a seed into an adult plant.**



**(a) Arrange the stages of growth of the seed into an adult plant in the correct sequence.**

**[1m]**



**(b) James grew some seeds using dry cotton-wool. The seeds did not germinate. Explain why this happened. [1m]**

---

---

(c) James took 3 plants P, Q and R and removed parts of each plant.

The table below shows the plant parts that were removed from the three plants.

Plants	Parts that were removed
P	Roots
Q	Flowers
R	Fruits

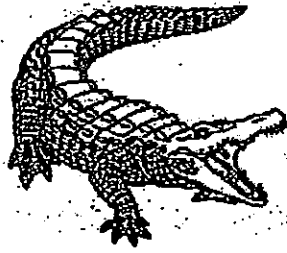
Which of the plants will die first? Explain your answer. [1m]

---

---

	1
--	---

17. Study the pictures below carefully.



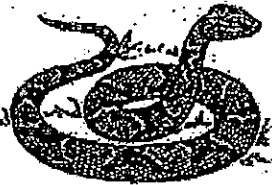
Crocodile

(a) Give a reason why crocodiles are not amphibians. [1m]

---

---

(b) Based on the pictures below, classify the following animals into two groups. [2m]



Snake



Salamander



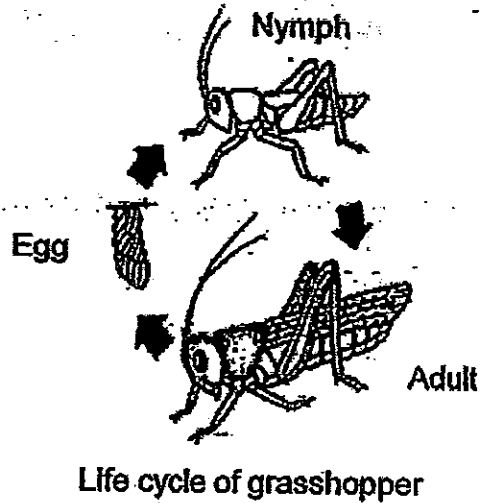
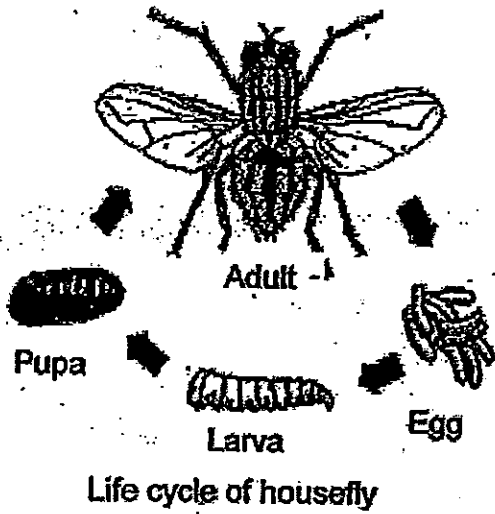
Frog



Crocodile


	3
--	---

18. The pictures below show the life cycle of 2 animals.



(a) Write True or False for the each of the statement shown below. [2m]

(i)	The housefly has wings at the adult and pupa stages of its life.	
(ii)	The grasshopper nymph can move from place to place while the <sup>housefly</sup> pupa cannot move from place to place.	
(iii)	The life cycle of a cockroach has similar number of stages as the life cycle of the grasshopper.	
(iv)	In the pupa stage of the life cycle of the housefly, it will undergo moulting.	

(b) Based on the above diagram, what is the difference between the young of both animals? [1m]

---

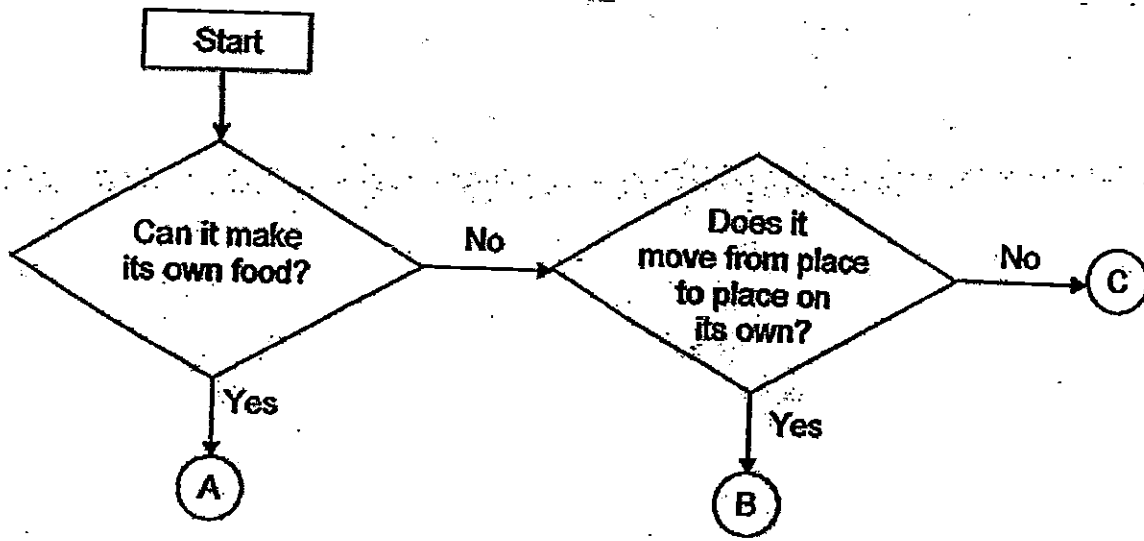


---

	3
--	---



19. Study the flowchart below.



(a) Which of the following living things represent A, B and C? [1m]

Plant: \_\_\_\_\_

Fungi: \_\_\_\_\_

Animal: \_\_\_\_\_

(b) Based on the flow chart, which letter, A, B or C represents a mushroom?  
State your reasons using the information from the flowchart. [1m]

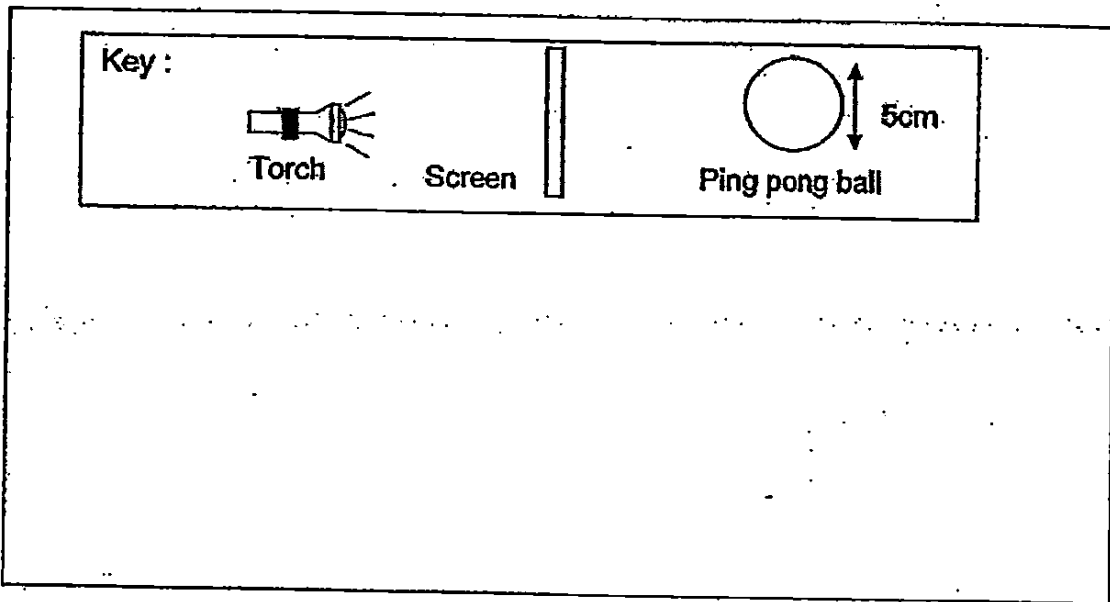
---

---

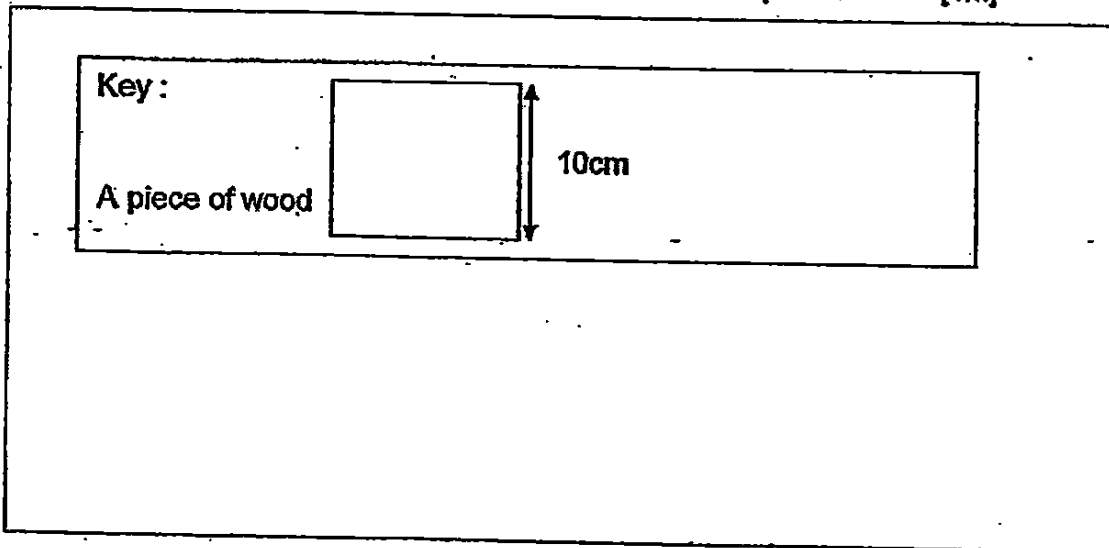
20. Sarah shone a torch at a ping pong ball and a shadow as shown below, is formed on the screen.



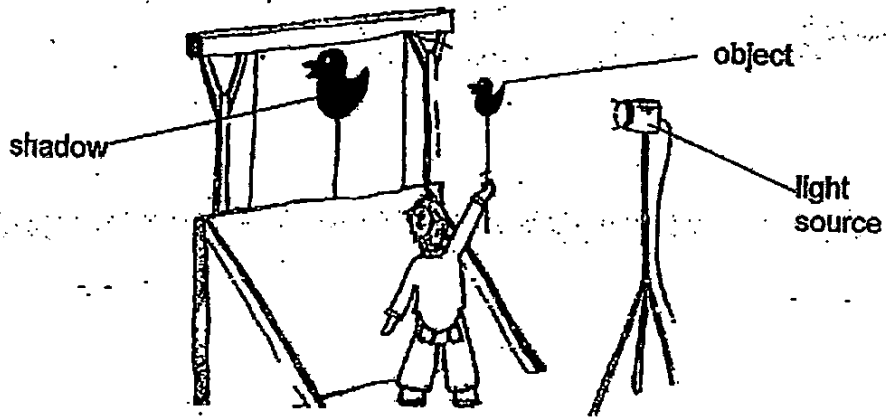
- (a) Draw the setup of Sarah's experiment in the space below. [1m]



- (b) Sarah then placed a piece of wood, as shown below, in front of the ping pong ball. Draw the shadow which is formed on the screen in the space below. [1m]



21. Observe the shadow cast by the object as shown in the diagram below.



(a) Based on your observation of the shadow, explain the difference in the shadow when the object moves further from the light source. [1m]

---

---

(b) The diagram below shows a picture of shadow puppets.



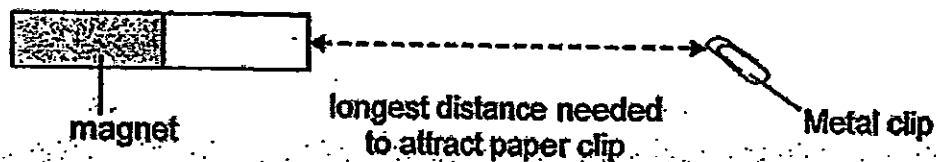
Which material (clear plastic or dark-coloured paper) is more suitable for making the puppets? Explain your answer. [1m]

---

---

	2
--	---

22. The diagram below shows an experiment carried out by Glenn with 3 magnets, X, Y and Z.



Glenn moved the magnet slowly towards the metal clip and recorded the longest distance between the magnet and the metal clip before the metal clip was attracted to the magnet. He repeated the experiment with magnets Y and Z and recorded the results in the table below.

Magnet	X	Y	Z
Distance needed to attract metal clip (cm)	7	11	4

- (a) Based on the results, which magnet X, Y or Z was the strongest?

Explain your answer. [1m]

---

---

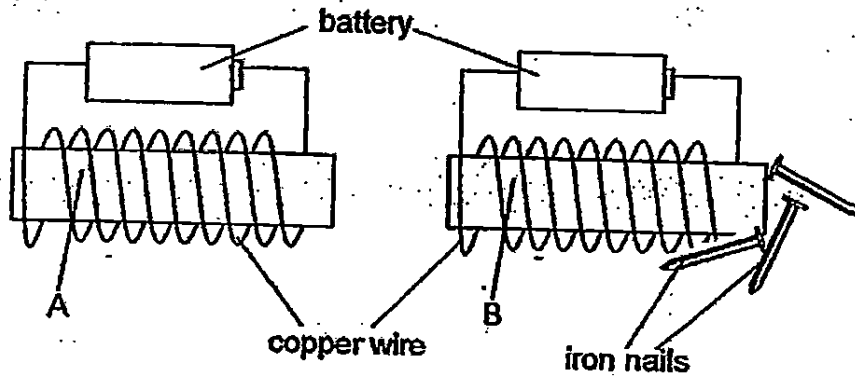
- (b) When Glenn used a metal clip of another material, the clip was not attracted to the magnet. Give a reason for this observation. [1m]

---

---

	2
--	---

23. Kumar conducted an experiment using the set-up of an electromagnet below.



For both set-ups, he used the same type of battery and copper wire. The copper wires were of the same length. The number of coils around Material A and B were also the same. However, only B attracted the iron nails.

(a) Based on the observation above, what can he conclude about material A? [1m]

---

---

(b) Suggest two ways that will cause material B to attract more iron nails. [2m]

- i) \_\_\_\_\_
- ii) \_\_\_\_\_

	3
--	---

~ End of Paper ~



**EXAM PAPER 2015**

**SCHOOL : RIVER VALLEY**

**SUBJECT : P3 SCIENCE**

**TERM : SA2**

Q1	Q2	Q3	Q4	Q5	Q6	Q7	Q8	Q9	Q10
4	4	2	4	2	3	2	2	1	1
Q11	Q12	Q13	Q14	Q15					
2	1	2	4	3					

16) a) C→A→B→D

b) Seeds need air, water and warmth to germinate.

c) Plant P will die first, because the plant cannot absorb any water and nutrients.

17) a) Crocodile has an outer covering of scales while amphibians has an outer covering of skin.

b) Reptile

Crocodile

Snake

Amphibian

Frog

Salamander

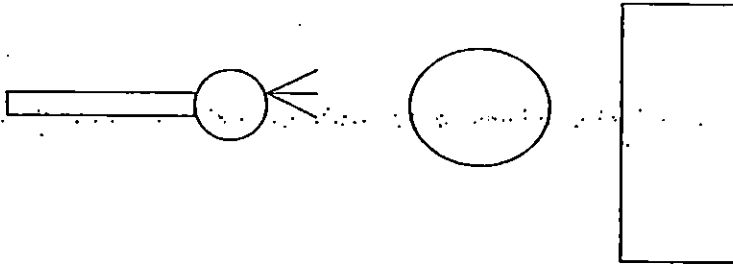
18) a) i) F      ii) T      iii) T      iv) F

b) Based on the above diagram, the young of housefly does not have the same appearance as the housefly while young of the grasshopper has the same appearance as the grasshopper.

19) a) A , C , B

b) C. Based on the flow chart, C represents a mushroom as mushroom do not make its own food and do not move from one place to another on its own.

20) a)



b)



21) a) When the object moves further from the light source, the object become smaller and sharper.

b) Dark-coloured paper is more suitable for making the puppets, because dark-coloured paper is an opaque material so light cannot pass through it.

22) a) Magnet Y is the strongest magnet, because magnet Y can attract the metal clip further magnets X and Z.

b) The material is a non-magnetic material.

**23)a) Based on the observation, he can conclude material A is a non-magnetic material.**

**b)i) Put more coils.**

**ii) Add more battery.**